

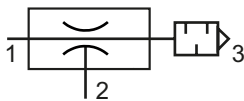
# Series HV

## Technical details

<b>Temperature range</b>	0°C ... +60°C
<b>Medium</b>	Filtered, oil-free and dried compressed air according to ISO 8573-1:2010, Class 7:2:4, instrument air, free of aggressive additives. Alternatively the pressure dew point must be at least 10°C below lowest occurring ambient temperature.
<b>Materials</b>	Body: Al (anodized), fittings: brass, nickel plated, silencer: plastic



Vacuum ejectors work according to the Venturi principle. The pressure and vacuum connection have an integrated filter which protects against large dirt particles. The granulate silencer is part of delivery. The HV series is developed for high vacuum level.



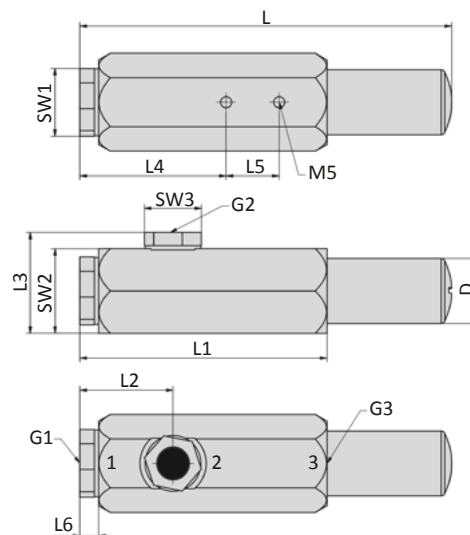
## Technical data

Model-no.:	HV-33	HV-63	HV-93	HV-133	HV-333	HV-533
<b>Max. vacuum level (%)</b>	95	95	95	95	95	95
<b>Flow rate (l/min)**</b>	4	10	15	30	40	45
<b>Air consumption (l/min)*</b>	25	45	70	120	300	480
<b>Time to evacuate (s/l)**</b>	7.50	3.20	2.00	0.95	0.53	0.42
<b>Nozzle-Ø (mm)</b>	0.7	1.1	1.3	1.7	2.5	3.0
<b>Operating pressure (bar)</b>	4 ... 6	4 ... 6	4 ... 6	4 ... 6	4 ... 6	4 ... 6
<b>Weight (kg)</b>	0.052	0.131	0.131	0.242	0.368	0.385

\* at 5 bar operating pressure

\*\* at 70% vacuum level and 5 bar operating pressure

## Dimensions



- 1 = pressure inlet
- 2 = vacuum inlet
- 3 = exhaust

Model-no.:	L	L1	L2	L3	L4	L5	L6	SW1	SW2	SW3	G1	G2	G3	Ø D
<b>HV-33</b>	76	49.5	23.5	27.8	-	-	6.5	17	17	13	G1/8	G1/8	G1/8	15
<b>HV-63</b>	129.5	82.5	33.5	34.5	47	16	6.5	24	19	13	G1/4	G1/8	G3/8	24.5
<b>HV-93</b>	129.5	82.5	33.5	34.5	47	16	6.5	24	19	13	G1/4	G1/8	G3/8	24.5
<b>HV-133</b>	140	93	35	38	55	20	7	32	24	19	G1/4	G1/4	G1/2	24.5
<b>HV-333</b>	207	110	35	38.1	52	29	7	32	24	19	G1/4	G1/4	G3/4	48
<b>HV-533</b>	207	110	35	38.1	52	29	7	32	24	19	G1/4	G1/4	G3/4	48