

# Series PI-01, PI-02, PI-03

## ISO 5599/1, Size 1 to 3

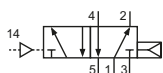
### Technical details

<b>Connection</b>	ISO 5599/1
<b>Nominal size</b>	Size 1: 9 mm Size 2: 13 mm Size 3: 14 mm
<b>Temperature range</b>	-10°C ... +70°C
<b>Medium</b>	Filtered, oil-free and dried compressed air according to ISO 8573-1:2010, Class 7:2:4, instrument air, free of aggressive additives. Alternatively the pressure dew point must be at least 10°C below lowest occurring ambient temperature.
<b>Materials</b>	Body: Al (anodized), seals: NBR and POM, inner parts: Al, stainless steel and brass
	Valves in accordance with 2014/34/EU (ATEX) available. (Chapter 13)

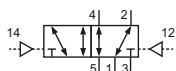


Pneumatically operated spool valve. The valve switches upon pressurization of the pilot port.

### 5/2-way valves

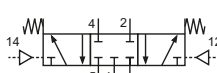


PI-01-511  
PI-02-511  
PI-03-511  
5/2-way, single pilot, mechanical spring return

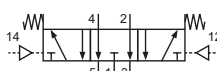


PI-01-520  
PI-02-520  
PI-03-520  
5/2-way, double pilot

### 5/3-way valves



PI-01-530  
PI-02-530  
PI-03-530  
5/3-way, center position closed



PI-01-533  
PI-02-533  
PI-03-533  
5/3-way, center position exhausted

### Technical data

Model-no.:	PI-01-511	PI-01-520	PI-01-530	PI-01-533
<b>Operating pressure (bar)</b>	0...10 bar	0...10 bar	0...10 bar	0...10 bar
<b>Pilot pressure (bar)</b>	2.5...10 bar	1.5...10 bar	1.5...10 bar	1.5...10 bar
<b>Flow rate (NI/min)</b>	1700	1700	1700	1700
<b>Weight (kg)</b>	0.32	0.32	0.32	0.32

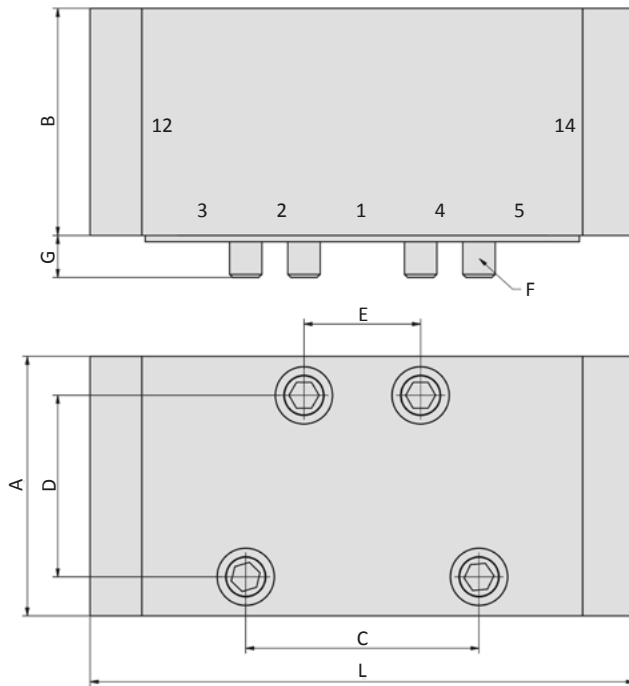
  

Model-no.:	PI-02-511	PI-02-520	PI-02-530	PI-02-533
<b>Operating pressure (bar)</b>	0...10 bar	0...10 bar	0...10 bar	0...10 bar
<b>Pilot pressure (bar)</b>	2.5...10 bar	1.5...10 bar	1.5...10 bar	1.5...10 bar
<b>Flow rate (NI/min)</b>	2020	2020	2020	2020
<b>Weight (kg)</b>	0.54	0.56	0.54	0.54

Model-no.:	PI-03-511	PI-03-520	PI-03-530	PI-03-533
<b>Operating pressure (bar)</b>	0...10 bar	0...10 bar	0...10 bar	0...10 bar
<b>Pilot pressure (bar)</b>	2.5...10 bar	1.5...10 bar	1.5...10 bar	1.5...10 bar
<b>Flow rate (NI/min)</b>	4150	4150	4150	4150
<b>Weight (kg)</b>	0.96	1.00	0.96	0.96

**Dimensions**



5

Model-no.:	A	B	C	D	E	F	G
PI-01-5xx	40	35	36	28	18	M5	8
PI-02-5xx	50	40	48	38	24	M6	8
PI-03-5xx	65	45	64	48	32	M8	13

**Accessories**



Manifolds and accessories: [www.airtec.de](http://www.airtec.de)