

Series MC-20 and MD-20

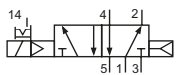
Technical details

Connection	Sub-base mounting
Nominal size	3 mm
Temperature range	-10°C ... +70°C
Medium	Filtered, oil-free and dried compressed air according to ISO 8573-1:2010, Class 7:2:4, instrument air, free of aggressive additives. Alternatively the pressure dew point must be at least 10°C below lowest occurring ambient temperature.
Materials	Body: Al (anodized), plastic, seals: NBR, inner parts: Al, steel and plastic
Protection	IP 65 according to EN 60529

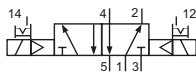


Electrically operated spool valve. The manual override is detent and is operated by screwdriver. Gaskets and screws are part of delivery.

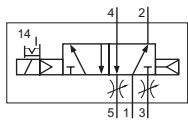
5/2-way valves



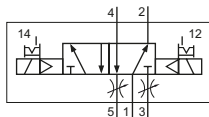
MC-20-510-HN-xxx
5/2-way, single solenoid, air spring return



MC-20-520-HN-xxx
5/2-way, double solenoid



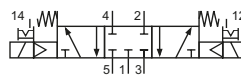
MD-20-510-HN-xxx
5/2-way, single solenoid, air spring return, with exhaust throttles



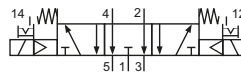
MD-20-520-HN-xxx
5/2-way, double solenoid, with exhaust throttles

Please complete: xxx = electrical option

5/3-way valves



MC-20-530-HN-xxx
5/3-way, center position closed



MC-20-533-HN-xxx
5/3-way, center position exhausted

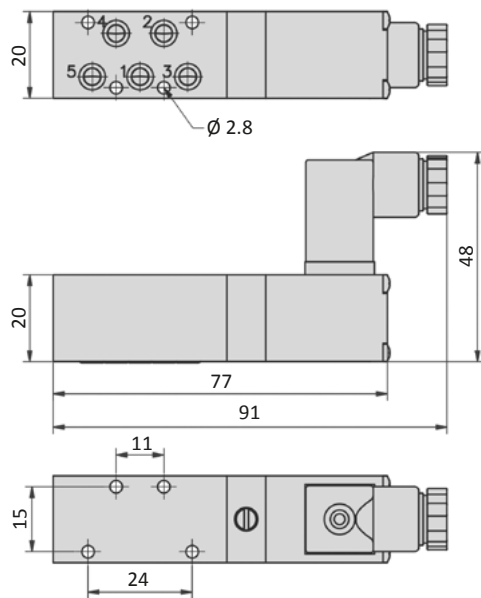
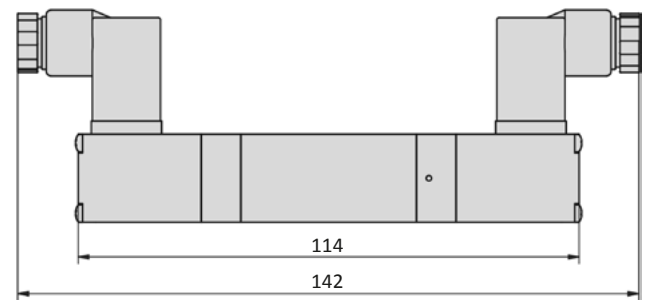
Electrical options

Nominal voltage	Power consumption	Specifics	Plug connection*1	-xxx Plug connections	
				opposite 1,2,3,4,5	at 1,2,3,4,5
12 V DC	1 W		Form C industrial norm	-411	-441
24 V DC	1 W		Form C industrial norm	-412	-442

*1 Plug socket not included, suitable plug sockets see page 4-39.

Technical data

Model-no.:	MC-20-510 MD-20-510	MC-20-520 MD-20-520	MC-20-530	MC-20-533
Operating pressure (bar)	2.5 ... 8	2.5 ... 8	3 ... 8	3 ... 8
Pilot pressure (bar)	2.5 ... 8	2.5 ... 8	3 ... 8	3 ... 8
Flow rate (NI/min)	220	220	220	220
Response time (ms) at 6 bar	on: 12 off: 12	on: 11 off: 11	on: 15 off: 22	on: 15 off: 22
Weight (kg)	0.100	0.156	0.162	0.162

Dimensions
MC-20-510-HN

MC-20-520-HN, MC-20-53x-HN


- 1 = pressure inlet
- 2,4 = outlets
- 3,5 = exhausts

Plug socket (not included in scope of delivery) can be repositioned by 180°.
Solenoid coil can be repositioned by 4 x 90°.

Accessories


Plug sockets: page 4-39