

Series ICK-09 and ICK-10

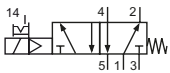
Technical details

Connection	ICK-09: G1/8 ICK-10: G1/4
Nominal size	ICK-09: 6 mm ICK-10: 9 mm
Temperature range	-30°C ... +80°C
Medium	Filtered, oil-free and dried compressed air according to ISO 8573-1:2010, Class 7:2:4, instrument air, free of aggressive additives. Alternatively the pressure dew point must be at least 10°C below lowest occurring ambient temperature.
Materials	Body: Al (anodized), seals: FKM and PU, inner parts: Al, stainless steel and brass
Protection	IP 65 according to EN 60529

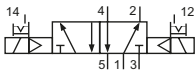


Electrically operated spool valve. The manual override is detent and is operated by screwdriver.

5/2-way valves

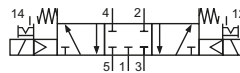


ICK-09-511-HN-xxx
ICK-10-511-HN-xxx
5/2-way, single solenoid, mechanical spring return



ICK-09-520-HN-xxx
ICK-10-520-HN-xxx
5/2-way, double solenoid

5/3-way valves



ICK-09-530-HN-xxx
ICK-10-530-HN-xxx
5/3-way, center position closed

Please complete: xxx = electrical option

Electrical options

Nominal voltage	Power consumption	Specifics	Plug connection*1	-xxx Manual override on same side of ports	
				2 and 4	1, 3 and 5
24 V DC	4.2 W		Form B industrial norm	-F42	-F12

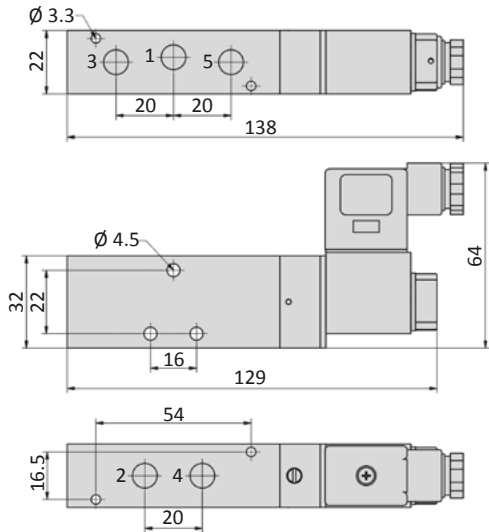
*1 Plug socket not included, suitable plug sockets see page 6-14.

Technical data

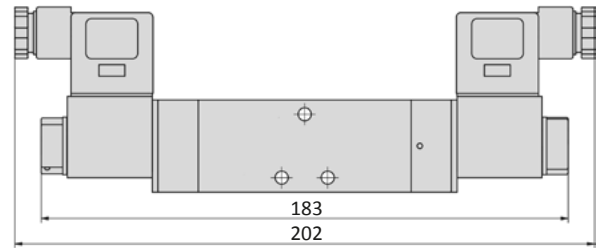
Model-no.:	ICK-09-511	ICK-09-520	ICK-09-530	ICK-10-511	ICK-10-520	ICK-10-530
Operating pressure (bar)	3 ... 8	3 ... 8	3 ... 8	2.5 ... 8	2.5 ... 8	3 ... 8
Pilot pressure (bar)	3 ... 8	3 ... 8	3 ... 8	2.5 ... 8	2.5 ... 8	3 ... 8
Flow rate (NI/min)	810	950	680	1800	2100	1500
Response time (ms) at 6 bar	on: 13 off: 28	on: 15 off: 15	on: 14 off: 16	on: 16 off: 27	on: 18 off: 18	on: 16 off: 22
Weight (kg)	0.231	0.330	0.330	0.470	0.630	0.630

Dimensions

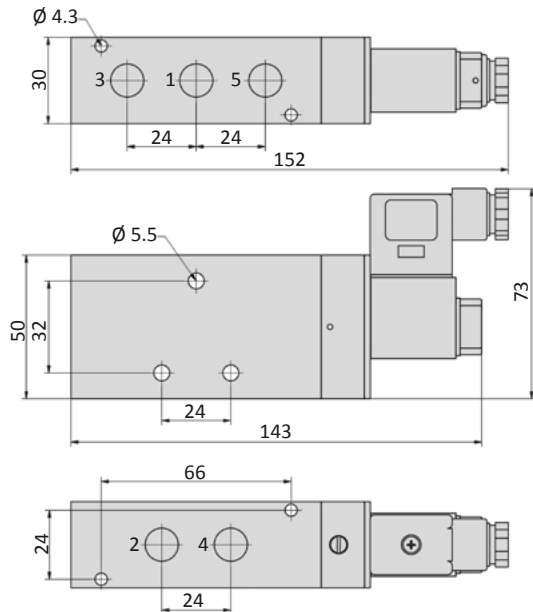
ICK-09-511-HN



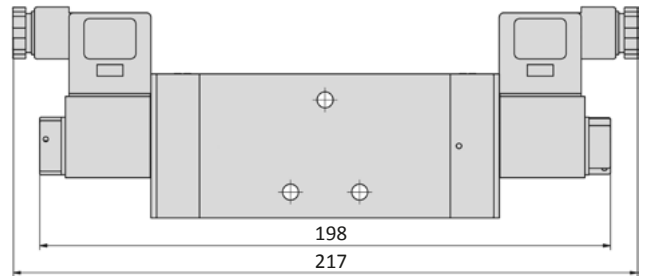
ICK-09-520-HN, ICK-09-530-HN



ICK-10-511-HN



ICK-10-520-HN, ICK-10-530-HN



1 = pressure inlet
2,4 = outlets
3,5 = exhausts

Plug socket (not included in scope of delivery) can be repositioned by 180°. Solenoid coil can be repositioned.

Accessories



Plug sockets: page 6-14



Manifolds and accessories: page 4-21

