

## Series 86-MV-5-38

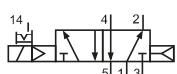
## Technical details

<b>Connection</b>	pressure inlets G3/8, exhausts G1/4
<b>Temperature range</b>	-10°C ... +70°C
<b>Medium</b>	Filtered, oil-free and dried compressed air according to ISO 8573-1:2010, Class 7:2:4, instrument air, free of aggressive additives. Alternatively the pressure dew point must be at least 10°C below lowest occurring ambient temperature.
<b>Materials</b>	Body: Al (anodized), plastic, seals: NBR, inner parts: Al, steel and plastic
<b>Protection</b>	IP 65 according to EN 60529

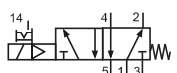


Electrically operated spool valve. The manual override is detent/ non-detent. It is operated manually or by screwdriver.

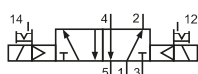
## 5/2-way valves



86-MV-5-38-510-xxx  
5/2-way, single solenoid, air spring return

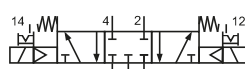


86-MV-5-38-511-xxx  
5/2-way, single solenoid, mechanical spring return

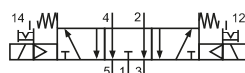


86-MV-5-38-520-xxx  
5/2-way, double solenoid

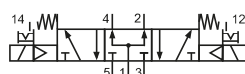
## 5/3-way valves



86-MV-5-38-530-xxx  
5/3-way, center position closed



86-MV-5-38-533-xxx  
5/3-way, center position exhausted



86-MV-5-38-534-xxx  
5/3-way, center position pressurized

Please complete: xxx = electrical option

## Electrical options

Nominal voltage	Power consumption	Specifics	Plug connection*1	-XXX Manual override on same side of ports 2 and 4
24 V DC	3 W		Form B industrial norm	-M42
220 V AC	3.5 VA		Form B industrial norm	-M57

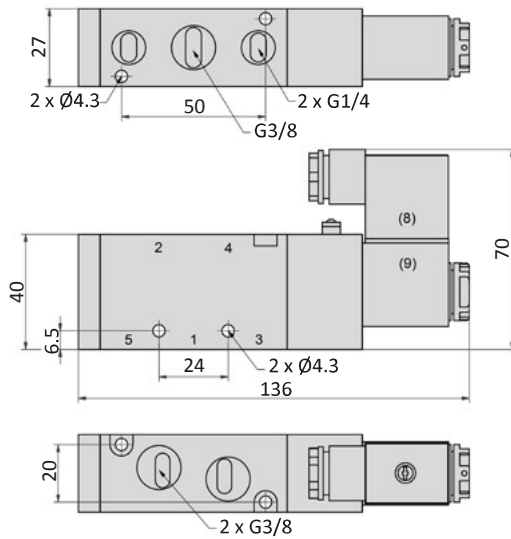
\*1 Plug socket with integrated LED are part of delivery

## Technical data

Model-no.:	86-MV-5-38-510	86-MV-5-38-511	86-MV-5-38-520	86-MV-5-38-530	86-MV-5-38-533	86-MV-5-38-534
<b>Operating pressure (bar)</b>	1.5...8	1.5...8	1.5...8	1.5...8	1.5...8	1.5...8
<b>Nominal size (mm)</b>	6	6	6	5	5	5
<b>Flow rate (NI/min)</b>	1600	1600	1600	980	980	980
<b>Response time (ms) at 6 bar</b>	20	20	20	20	20	20
<b>Weight (kg)</b>	0.285	0.285	0.395	0.454	0.454	0.454

**Dimensions**

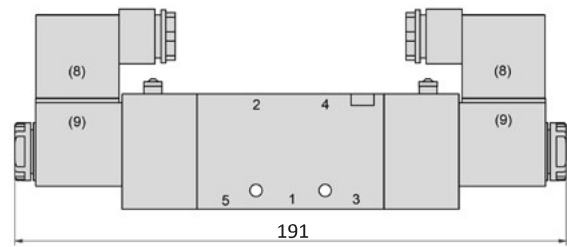
**86-MV-5-38-510, 86-MV-5-38-511**



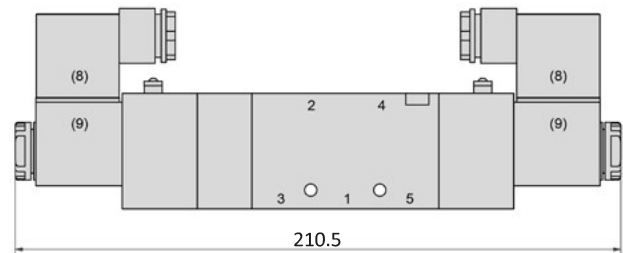
- 1 = pressure inlet
- 2,4 = outlets
- 3,5 = exhausts

Plug socket can be repositioned by 180°.  
Solenoid coil can be repositioned by 4 x 90°.

**86-MV-5-38-520**



**86-MV-5-38-53x**



**Accessories**



Plug sockets: page 40



Manifolds: page 26