



Solutions in Motion.

Customer-specific turn-key solutions
in pneumatic control technology





Over forty years' of experience in pneumatic control technology.

With our extensive experience and wide range of services in the field of pneumatic process-control technology, AIRTEC Pneumatic GmbH is a world leader in the development and production of innovative customer- and application-specific solutions.

Customers from many industries have realized the value, benefits and advantages of collaborating with us. Contact us today to see how we can assist you in developing ready-to-install, innovative solutions that allow you to focus on your core strengths.



**Your partner
for innovative,
customer-specific
solutions**



A proven track record in a broad range of industries.

- Agricultural engineering
- Chemicals and pharmaceuticals industry
- Handling / automation
- Woodworking machinery
- Plastics industry
- Food and beverage industry

- Machinery and plant engineering
- Commercial vehicle technology
- Shipping and marine technology
- Vacuum technology
- Packaging technology
- Machine tools

Our 360-degree service



Installation service



Experienced process and project managers



Specialist advice



Global trading and co-operation partners



Processing metal and plastic, surface treatments, refinement



Internal development department for fluidics, electronics & mechanical engineering



Storage and logistics management



Internal production of prototypes and fixtures



Quality management, including certification

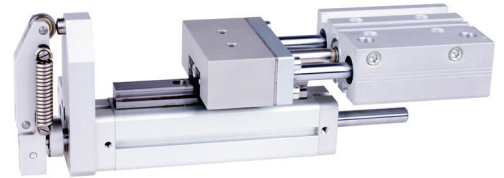


Cutting edge facilities and equipment

CASE STUDIES

Measuring equipment for tools and machinery

The customer required a robust and reliable measuring system consisting of two linear drives. One of the linear drives included a swivel action at the end of the stroke. The entire structural component was supplied ready to install, and has been tailored to fit into the existing installation space.



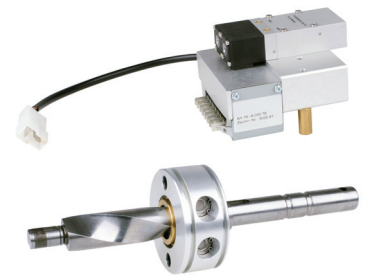
Control unit for adhesive technology

The industrial adhesives plant requested that all pneumatic control elements be combined into a single control package. The complete system was manufactured and tested at AIRTEC, streamlining the process and eliminating mistakes during installation and operation.



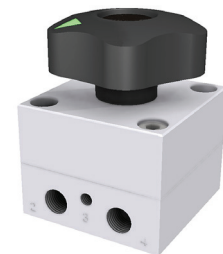
Door closing actuator and controls for coaches and buses

This world-leading supplier of coach and tour bus doors wanted to optimize the controls and actuator components. The focus was on size, functionality, and simplified installation. In collaboration with AIRTEC's partner IWN, the ideal solution was developed.



Rotary switch valve for use in extreme conditions

A custom robust pneumatic rotary switch valve was created for use in commercial vehicles. The requirements included high flow rate, compact size, a temperature range from -40°C to $+80^{\circ}\text{C}$ (-40°F to $+176^{\circ}\text{F}$), and a secure latching mechanism, all of which we were able to achieve.



Solutions in Motion.

Multi-position control system

This compact multi-position control system was developed for repeatable and reliable positioning of a double acting cylinder in the woodworking industry. This all-in-one, ready to install, solution improved reliability and ease of use.



Dosing pump

This dosing pump was developed for the paint technology field. High-precision machining and assembly was required in order to meet the strict dosing specification. High-grade 1.4401 (V4A) steel was used to withstand the various chemicals.



Enclosed control panels

AIRTEC constructs complete control panels for a large number of customers in various industries. These systems ship completely tested and ready for installation according to the customer's specifications. These systems can be assembled into plastic, aluminum, painted steel, or high-grade steel housings.



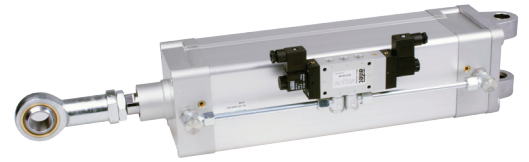
Cylinder-valve combination with an integrated valve

A ready-to-install solution was created using an ISO 15552 cylinder with integrated valves and sensors. Initially developed for use in transportation, it was also adopted for use on sorting equipment. The valve and sensor connections are via a common M12 connection. All functions are achieved with a single air connection.



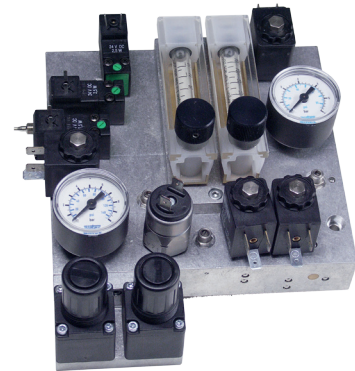
Cylinder–valve combination for added safety

Developed for use in the bulk materials processing, this unique cylinder-valve combination was created to ensure safe operation during filling operations. The solution resulted in a dependable core component due to the robust design and rigid piping.



Control block for noble gases

This solenoid valve control block is used in metal analysis devices for quality control in research and development laboratories. This system needed to be highly precise under pressure, with reliable and accurate flow rates and switching times. A key requirement was that the system must be free of grease and lubricants as well as lacquer or solvent-based substances. This resulted in the need for precise measurements and optimum process control. Assembly and testing was carried out under conditions mirroring the laboratory in order to meet these high-level requirements.



Solenoid valve with position sensors for added safety

This valve was designed with a special spool and sensor to detect the valve position. It is designed for areas requiring additional safety and to aid in troubleshooting which prevents maintenance due to incorrect diagnosis.



Cylinder with bellows

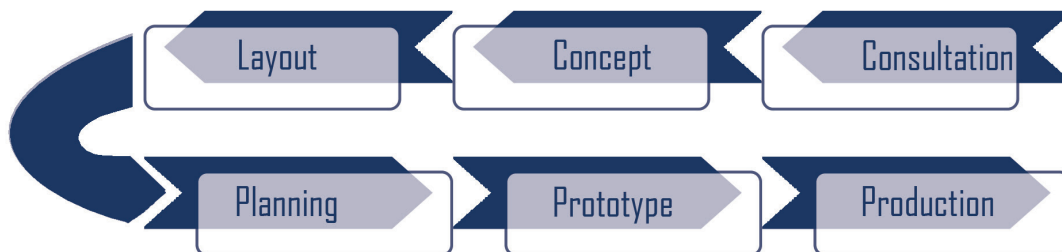
This solution required added protection for highly contaminated environments. The addition of boots and an optimum seal system protect the cylinders from premature failure.





**Put your trust in our business,
so you can focus on yours.**

Solve your automation challenges in six easy steps:





AIRTEC Pneumatics Inc.
730 Racquet Club Drive
Addison, IL 60101

Phone: 630.543.0265
Fax: 630.543.4420

info@airtec-usa.com
airtec-usa.com

Office Hours: 8am-5pm (CST)



Innovative
customer-specific
solutions