

Series SMS-170

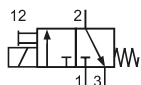
Technical details

Temperature range	-20°C ... +80°C
Medium	Filtered, oil-free and dried compressed air according to ISO 8573-1:2010, Class 7:2:4, instrument air, free of aggressive additives. Alternatively the pressure dew point must be at least 10°C below lowest occurring ambient temperature.
Materials	Body: Al (anodized), seals: HNBR, FKM, inner parts: Al, brass and steel
Protection	IP 65 according to EN 60529



Electrically operated high speed poppet valve.
The manual override is non detent.

3/2-way valves



SMS-170-18-xxx
SMS-170-14-xxx
3/2-way, single solenoid, mechanical
spring return, NC

Please complete: xxx = electrical option

Electrical options

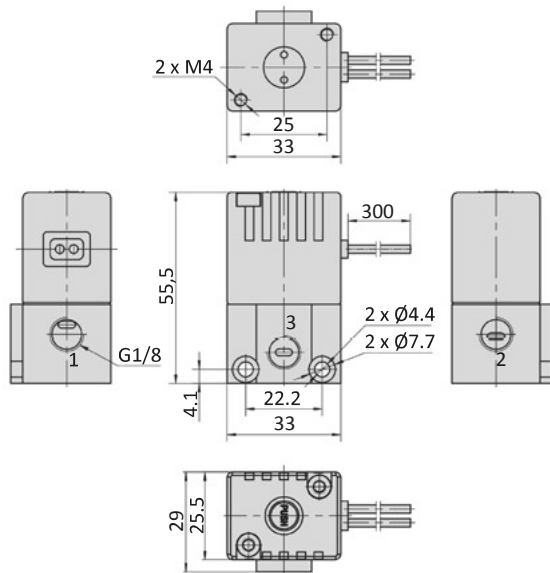
Nominal voltage	Power consumption	Voltage tolerance	Connection	-XXX
12 V DC	4.5 W	± 10 %	cable, 0.3 m length	-Q11
24 V DC	4.5 W	± 10 %	cable, 0.3 m length	-Q12

Technical data

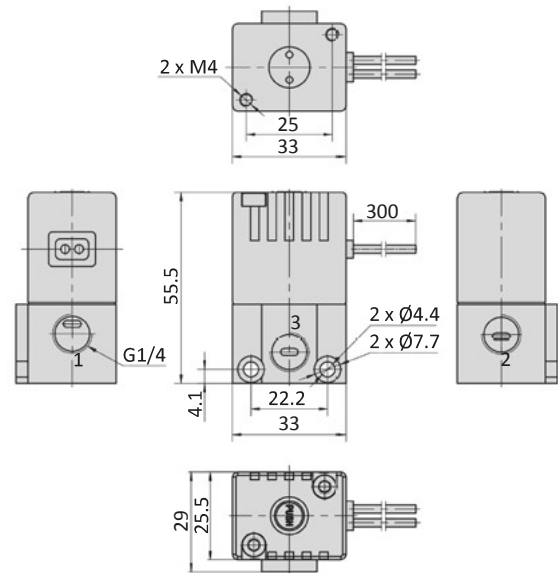
Model-no.:	SMS-170-18-Qxx	SMS-170-14-Qxx
Operating pressure (bar)	0 ... 10	0 ... 10
Flow rate (NI/min)	180	180
Response time (ms) at 6 bar	12	12
max. switching frequency (Hz)	40	40
Connection	G1/8	G1/4
Weight (kg)	0.156	0.150

Dimensions

SMS-170-18-Qxx



SMS-170-14-Qxx



- 1 = pressure inlet
- 2 = outlet
- 3 = exhaust