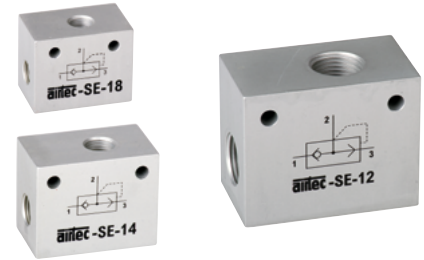
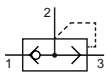


Technical details

Temperature range	-10°C ... +70°C
Medium	Filtered, oil-free and dried compressed air according to ISO 8573-1:2010, Class 7:2:4, instrument air, free of aggressive additives. Alternatively the pressure dew point must be at least 10°C below lowest occurring ambient temperature.
Materials	Body: Al (anodized), seals: NBR
	Valves in accordance with 2014/34/EU (ATEX) available. (Chapter 13)

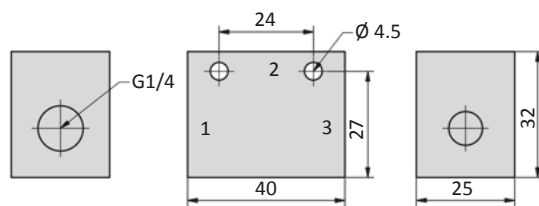
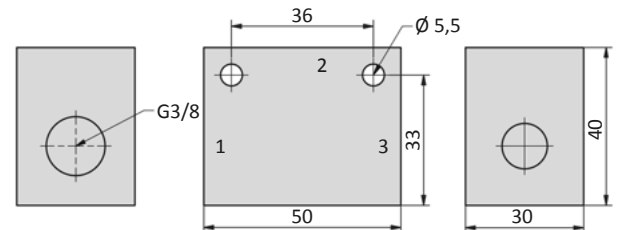
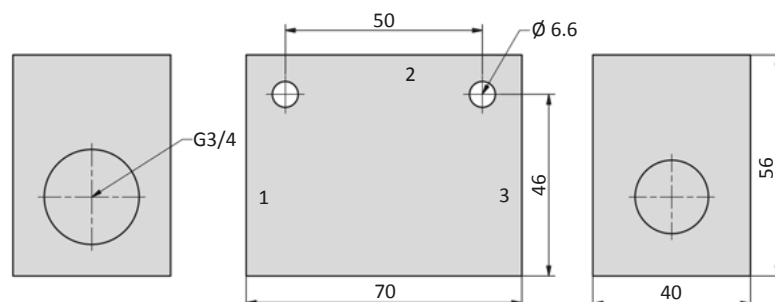


A quick exhaust valve is used to increase the speed of a pneumatic cylinder. The flow from the control valve to the cylinder ports is unrestricted. If valve port 1 is de-pressurized, air is exhausted from 2 to 3.

SE valves

 SE-xx
quick exhaust valve

Technical data

Model-no.:	SE-18	SE-14	SE-12
Connection	G1/8	G1/4	G1/2
Nominal size 1-2 (mm)	5	7	12
Nominal size 2-3 (mm)	8	10	16
Flow rate 1-2 (NI/min)	600	1200	2800
Flow rate 2-3 (NI/min)	1200	2400	5600
Operating pressure (bar)	0.5 ... 10	0.5 ... 10	0.5 ... 10
Weight (kg)	0.070	0.125	0.310

Dimensions
SE-18

SE-14

SE-12


- 1 = inlet from valve
- 2 = outlet to cylinder
- 3 = exhaust