

## Series P-05

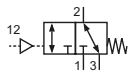
### Technical details

<b>Connection</b>	G1/8
<b>Nominal size</b>	6 mm
<b>Temperature range</b>	-10°C ... +70°C
<b>Medium</b>	Filtered, oil-free and dried compressed air according to ISO 8573-1:2010, Class 7:2:4, instrument air, free of aggressive additives. Alternatively the pressure dew point must be at least 10°C below lowest occurring ambient temperature.
<b>Materials</b>	Body: Al (anodized), seals: NBR and POM, inner parts: Al, brass, stainless steel
	Valves in accordance with 2014/34/EU (ATEX) available. (Chapter 13)

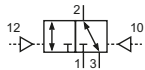


Pneumatically operated spool valve. The valve switches upon pressurization of the pilot port.

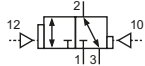
### 3/2-way valves



P-05-311  
3/2-way, single pilot, mechanical spring return

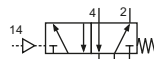


P-05-320  
3/2-way, double pilot

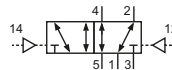


P-05-322  
3/2-way, double pilot, one side dominant

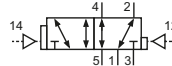
### 5/2- and 5/3-way valves



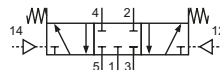
P-05-511  
5/2-way, single pilot, mechanical spring return



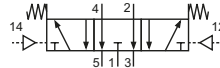
P-05-520  
5/2-way, double pilot



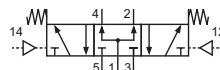
P-05-522  
5/2-way, double pilot, one side dominant



P-05-530  
5/3-way, center position closed



P-05-533  
5/3-way, center position exhausted



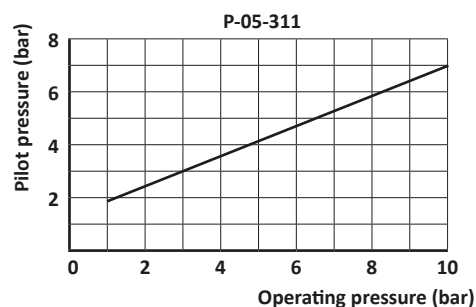
P-05-534  
5/3-way, center position pressurized

### Technical data

Model-no.:	P-05-311	P-05-320		P-05-322		
<b>Operating pressure (bar)</b>	1 ... 10	0 ... 10		0 ... 10		
<b>Pilot pressure (bar)</b>	see diagram	2 ... 10		2 ... 10		
<b>Flow rate (NI/min)</b>	750	750		750		
<b>Weight (kg)</b>	0.158	0.195		0.2		

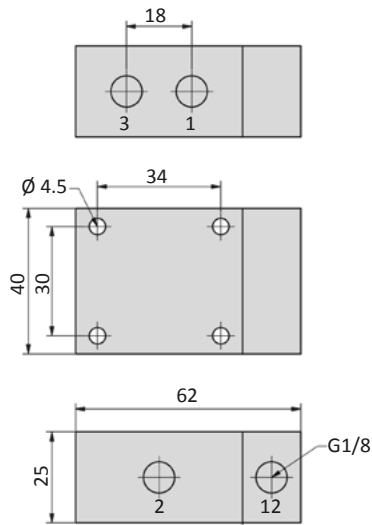
  

Model-no.:	P-05-511	P-05-520	P-05-522	P-05-530	P-05-533	P-05-534
<b>Operating pressure (bar)</b>	0 ... 10	0 ... 10	0 ... 10	0 ... 8	0 ... 8	0 ... 8
<b>Pilot pressure (bar)</b>	3 ... 10	2 ... 10	2 ... 10	3 ... 8	3 ... 8	3 ... 8
<b>Flow rate (NI/min)</b>	750	750	750	650	650	650
<b>Weight (kg)</b>	0.205	0.245	0.245	0.245	0.245	0.245

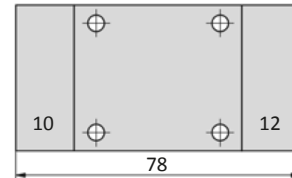


## Dimensions

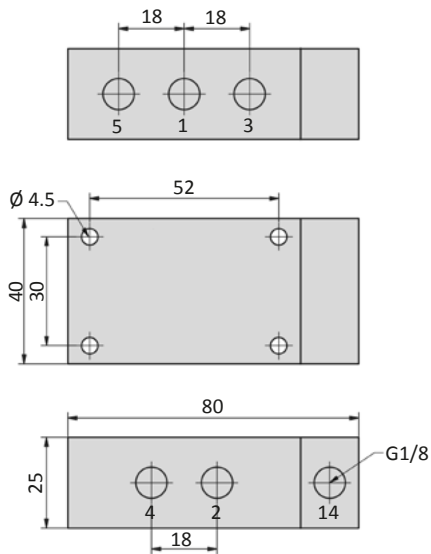
P-05-311



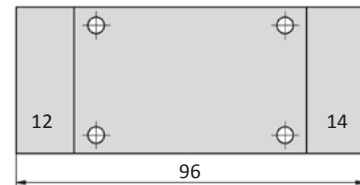
P-05-32x



P-05-511



P-05-52x, P-05-53x



- 1 = pressure inlet
  - 2,4 = outlets
  - 3,5 = exhausts
  - 10,12,14 = pilot ports
- Pilot ports can be repositioned by 180°.

## Accessories



Manifolds: page 4-10