

Series MN-06

NAMUR

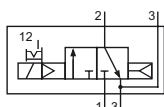
Technical details

Connection	G1/4, Namur
Nominal size	6 mm
Temperature range	-10°C ... +70°C
Medium	Filtered, oil-free and dried compressed air according to ISO 8573-1:2010, Class 7:2:4, instrument air, free of aggressive additives. Alternatively the pressure dew point must be at least 10°C below lowest occurring ambient temperature.
Materials	Body: Al (anodized), plastic, seals: NBR and POM, inner parts: Al, stainless steel and brass
Protection	IP 65 according to EN 60529
	Valves in accordance with 2014/34/EU (ATEX) available. (Chapter 13)

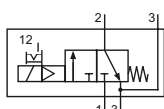


Electrically operated spool valve. The manual override is detent and is operated by screwdriver. The location pin, screws and seals are included.

3/2-way valves

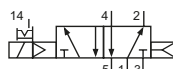


MN-06-310-HN-xxx
3/2-way, single solenoid, air spring return, NC

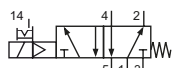


MN-06-311-HN-xxx
3/2-way, single solenoid, mechanical spring return, NC

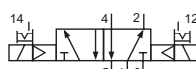
5/2- and 5/3-way valves



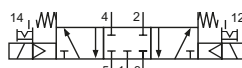
MN-06-510-HN-xxx
5/2-way, single solenoid, air spring return



MN-06-511-HN-xxx
5/2-way, single solenoid, mechanical spring return



MN-06-520-HN-xxx
5/2-way, double solenoid



MN-06-530-HN-xxx
5/3-way, center position closed

Please complete: xxx = electrical option

Electrical options

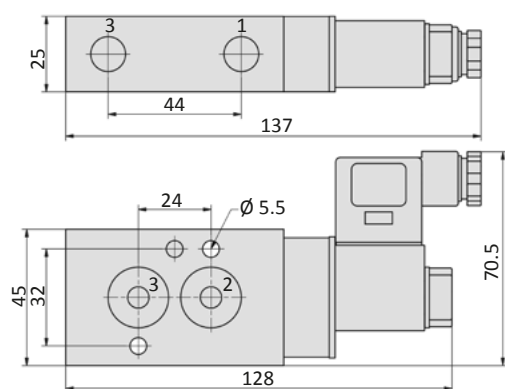
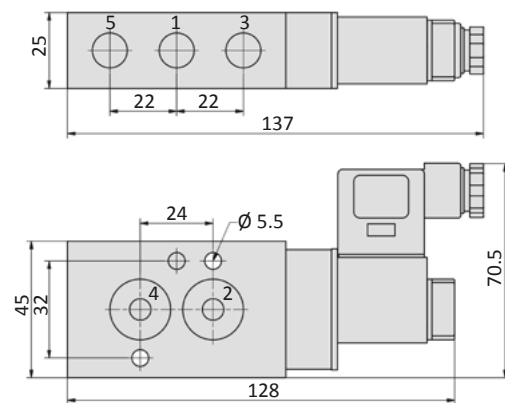
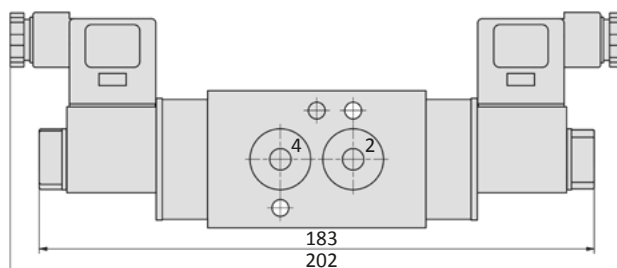
Nominal voltage	Power consumption	Specifics	Plug connection*1	-xxx
12 V DC	4.2 W		Form B industrial norm	-441
12 V DC	2.2 W	max. 8 bar	Form B industrial norm	-461
24 V DC	4.2 W		Form B industrial norm	-442
24 V DC	4.8 W		M 12	-O42
24 V DC	2.2 W	max. 8 bar	Form B industrial norm	-462
24 V DC	2.5 W	max. 8 bar	M 12	-O62
24 V AC	7/4 VA		Form B industrial norm	-452
115 V AC	7/4 VA		Form B industrial norm	-456
230 V AC	7/4 VA		Form B industrial norm	-457

*1 Plug socket not included, suitable plug sockets see page 4-38.

Technical data

Model-no.:	MN-06-310	MN-06-311	MN-06-510	MN-06-511	MN-06-520	MN-06-530
Operating pressure* (bar)	2...10	3...10	2...10	3...10	2...10	3...10
Pilot pressure* (bar)	2...10	3...10	2...10	3...10	2...10	3...10
Flow rate (NI/min)	750	750	750	750	750	650
Response time (ms) at 6 bar	on: 13 off: 16	on: 13 off: 16	on: 13 off: 16	on: 13 off: 16	on: 12 off: 12	on: 13 off: 15
Weight (kg)	0.320	0.320	0.320	0.320	0.460	0.460

* max. 8 bar at 2.2 W and 2.5 W

Dimensions
MN-06-31x-HN

MN-06-51x-HN

MN-06-520-HN, MN-06-530-HN

 1 = pressure inlet
 2,4 = outlets
 3,5 = exhausts

 Plug socket (not included in scope of delivery) can be repositioned by 180°.
 Solenoid coil can be repositioned by 4 x 90°.

Accessories


Plug sockets: page 4-38