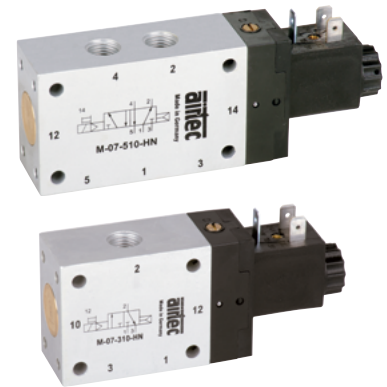


Technical details

Connection	G1/4
Nominal size	9 mm
Temperature range	-10°C ... +70°C
Medium	Filtered, oil-free and dried compressed air according to ISO 8573-1:2010, Class 7:2:4, instrument air, free of aggressive additives. Alternatively the pressure dew point must be at least 10°C below lowest occurring ambient temperature.
Materials	Body: Al (anodized), plastic, seals: NBR, inner parts: Al, steel and plastic
Protection	IP 65 according to EN 60529
	Valves in accordance with 2014/34/EU (ATEX) available. (Chapter 13)



Electrically operated spool valve. The manual override is detent and is operated by screwdriver.

3/2-way valves

	M-07-310-HN-xxx 3/2-way, single solenoid, air spring return, NC
	MO-07-310-HN-xxx 3/2-way, single solenoid, air spring return, NO
	M-07-311-HN-xxx 3/2-way, single solenoid, mechanical spring return, NC
	MO-07-311-HN-xxx 3/2-way, single solenoid, mechanical spring return, NO
	ME-07-311-HN-xxx 3/2-way, single solenoid, external pilot pressure, mechanical spring return
	M-07-320-HN-xxx 3/2-way, double solenoid
	ME-07-320-HN-xxx 3/2-way, double solenoid, external pilot pressure

Please complete: xxx = electrical option

5/2- and 5/3-way valves

	M-07-510-HN-xxx 5/2-way, single solenoid, air spring return
	M-07-511-HN-xxx 5/2-way, single solenoid, mechanical spring return
	ME-07-511-HN-xxx 5/2-way, single solenoid, external pilot pressure, mechanical spring return
	M-07-520-HN-xxx 5/2-way, double solenoid
	ME-07-520-HN-xxx 5/2-way, double solenoid, external pilot pressure
	M-07-530-HN-xxx 5/3-way, center position closed
	M-07-532-HN-xxx 5/3-way, center position safety
	M-07-533-HN-xxx 5/3-way, center position exhausted
	M-07-534-HN-xxx 5/3-way, center position pressurized

Electrical options

Nominal voltage	Power consumption	Specifics	Plug connection*1	-XXX Manual override on same side of ports	
				2 or 2 and 4	1, 3 or 1, 3 and 5
12 V DC	4.2 W		Form B industrial norm	-441	-411
12 V DC	2.2 W	max. 8 bar	Form B industrial norm	-461	-431
24 V DC	4.2 W		Form B industrial norm	-442	-412
24 V DC	4.8 W		M 12	-042	-012
24 V DC	2.2 W	max. 8 bar	Form B industrial norm	-462	-432
24 V DC	2.5 W	max. 8 bar	M 12	-062	-032
24 V AC	7/4 VA		Form B industrial norm	-452	-422
115 V AC	7/4 VA		Form B industrial norm	-456	-426
230 V AC	7/4 VA		Form B industrial norm	-457	-427

*1 Plug socket not included, suitable plug sockets see page 4-38.

Series M-07

Technical data

Model-no.:	M-07-310	MO-07-310	M-07-311	MO-07-311	ME-07-311	M-07-320	ME-07-320
Operating pressure* (bar)	1.5 ... 10	1.5 ... 10	2.5 ... 10	2.5 ... 10	0 ... 10	1.5 ... 10	0 ... 10
Pilot pressure* (bar)	1.5 ... 10	1.5 ... 10	2.5 ... 10	2.5 ... 10	2.5 ... 10	1.5 ... 10	1.5 ... 10
Flow rate (NI/min)	1580	1580	1580	1580	1580	1580	1580
Response time (ms) at 6 bar	on: 15 off: 19	on: 15 off: 19	on: 15 off: 19	on: 15 off: 19	on: 15 off: 22	on: 14 off: 14	on: 14 off: 14
Weight (kg)	0.375	0.375	0.380	0.380	0.450	0.520	0.578

Model-no.:	M-07-510	M-07-511	ME-07-511	M-07-520	ME-07-520
Operating pressure* (bar)	1.5 ... 10	2.5 ... 10	0 ... 10	2 ... 10	0 ... 10
Pilot pressure* (bar)	1.5 ... 10	2.5 ... 10	2.5 ... 10	2 ... 10	2 ... 10
Flow rate (NI/min)	1580	1580	1580	1580	1580
Response time (ms) at 6 bar	on: 15 off: 19	on: 15 off: 22	on: 15 off: 19	on: 14 off: 14	on: 14 off: 14
Weight (kg)	0.455	0.465	0.530	0.620	0.650

Model-no.:	M-07-530	M-07-532	M-07-533	M-07-534
Operating pressure* (bar)	3 ... 8	3 ... 8	3 ... 8	3 ... 8
Pilot pressure* (bar)	3 ... 8	3 ... 8	3 ... 8	3 ... 8
Flow rate (NI/min)	1300	1280	1300	1300
Response time (ms) at 6 bar	on: 15 off: 22	on: 35 off: 42	on: 15 off: 22	on: 15 off: 22
Weight (kg)	0.620	0.620	0.620	0.620

* max. 8 bar at 2.2 W and 2.5 W

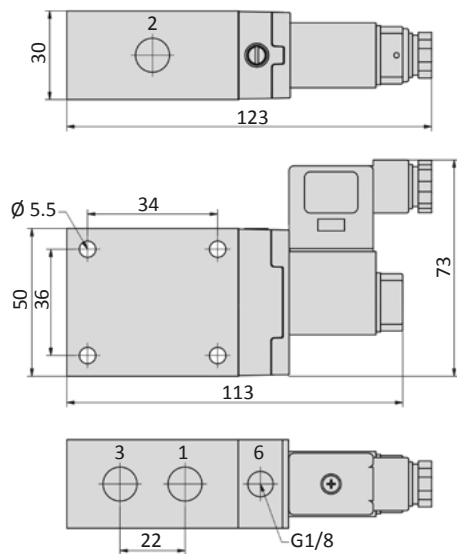
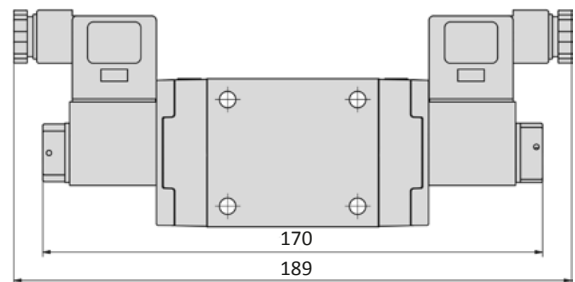
Accessories



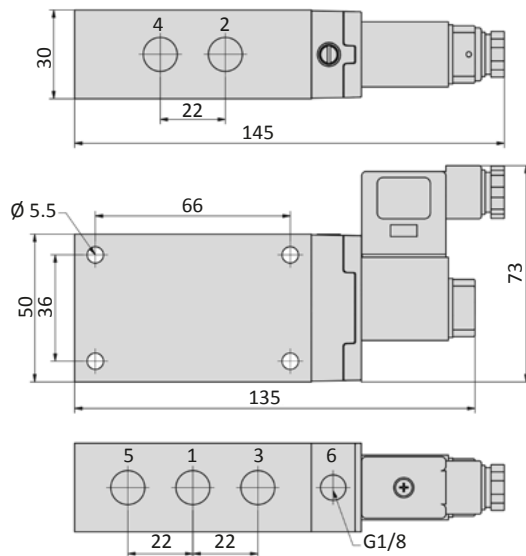
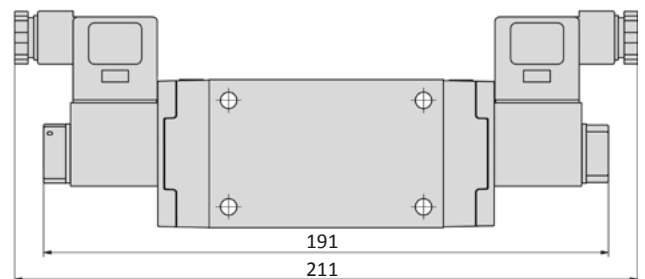
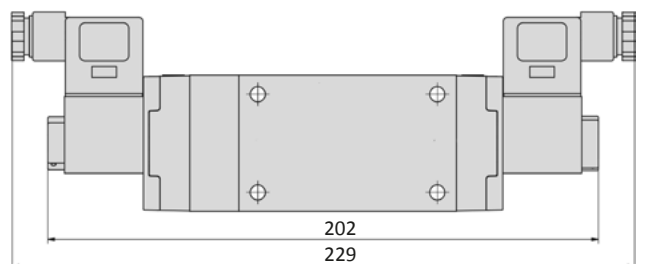
Plug sockets: page 4-38



Manifolds: page 4-14

Dimensions
M-07-31x-HN, MO-07-31x-HN*, ME-07-31x-HN

M-07-320-HN, ME-07-320-HN


*For the NO version MO-07 the ports 1 and 3 are inverted.

M-07-51x-HN, ME-07-511-HN

M-07-520-HN, ME-07-520-HN, M-07-53x-HN

M-07-532-HN


- 1 = pressure inlet
- 2,4 = outlets
- 3,5 = exhausts
- 6 = external pilot pressure supply (only at ME-valves)

Plug socket (not included in scope of delivery) can be repositioned by 180°.
Solenoid coil can be repositioned by 4 x 90°.

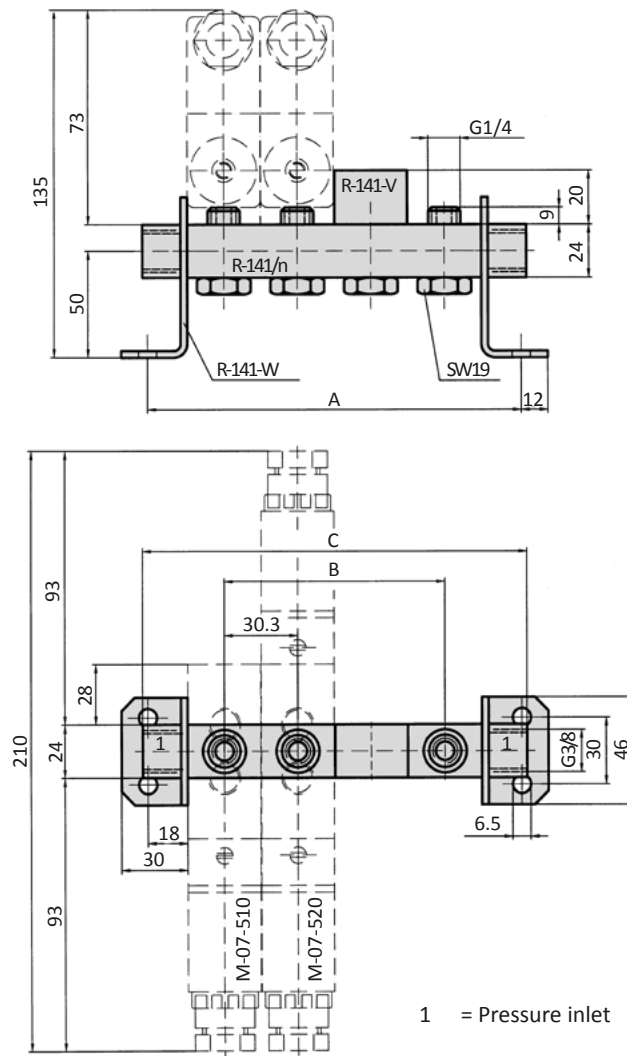
Series M-07

General information

The R-141/n manifold is suitable for the M-07 valve series. As well available are blind plates R-141-V for blank stations and mounting brackets R-141-W (pair). Hollow bolts and gaskets are included. The manifold is as well suitable for the pneumatically operated valve series P-07.



Dimensions



Model-no.:	A	B	C	Weight (kg)
R-141/2	96.6	30.3	100	0.165
R-141/3	126.9	60.6	130	0.227
R-141/4	157.2	90.9	160	0.287
R-141/5	187.5	121.2	190	0.349
R-141/6	217.8	151.5	220	0.412
R-141/8	248.1	181.8	250	0.473
R-141/12	399.6	333.3	400	0.781