

## Series ICK-09 and ICK-10

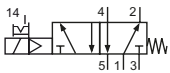
### Technical details

<b>Connection</b>	ICK-09: G1/8 ICK-10: G1/4
<b>Nominal size</b>	ICK-09: 6 mm ICK-10: 9 mm
<b>Temperature range</b>	-30°C ... +80°C
<b>Medium</b>	Filtered, oil-free and dried compressed air according to ISO 8573-1:2010, Class 7:2:4, instrument air, free of aggressive additives. Alternatively the pressure dew point must be at least 10°C below lowest occurring ambient temperature.
<b>Materials</b>	Body: Al (anodized), seals: FKM and PU, inner parts: Al, stainless steel and brass
<b>Protection</b>	IP 65 according to EN 60529

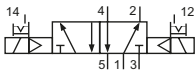


Electrically operated spool valve. The manual override is detent and is operated by screwdriver.

### 5/2-way valves

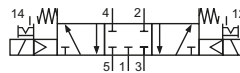


ICK-09-511-HN-xxx  
ICK-10-511-HN-xxx  
5/2-way, single solenoid, mechanical spring return



ICK-09-520-HN-xxx  
ICK-10-520-HN-xxx  
5/2-way, double solenoid

### 5/3-way valves



ICK-09-530-HN-xxx  
ICK-10-530-HN-xxx  
5/3-way, center position closed

Please complete: xxx = electrical option

### Electrical options

Nominal voltage	Power consumption	Specifics	Plug connection*1	-xxx Manual override on same side of ports	
				2 and 4	1, 3 and 5
24 V DC	4.2 W		Form B industrial norm	-F42	-F12

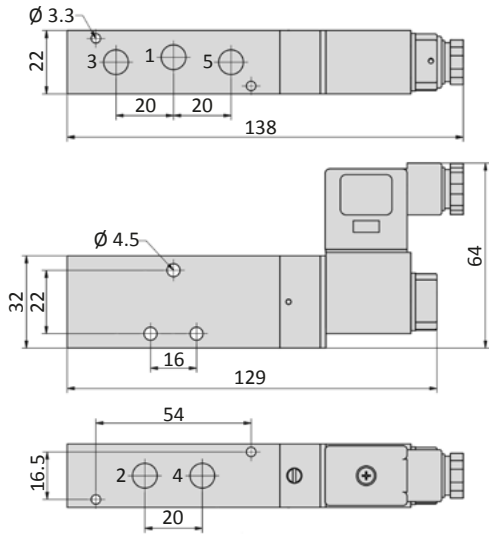
\*1 Plug socket not included, suitable plug sockets see page 6-14.

### Technical data

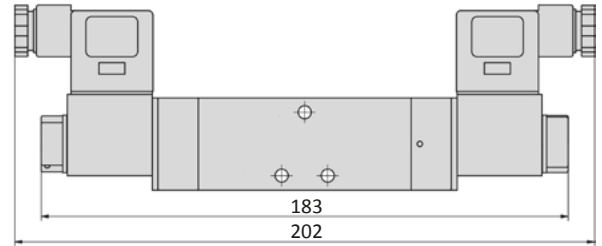
Model-no.:	ICK-09-511	ICK-09-520	ICK-09-530	ICK-10-511	ICK-10-520	ICK-10-530
<b>Operating pressure (bar)</b>	3 ... 8	3 ... 8	3 ... 8	2.5 ... 8	2.5 ... 8	3 ... 8
<b>Pilot pressure (bar)</b>	3 ... 8	3 ... 8	3 ... 8	2.5 ... 8	2.5 ... 8	3 ... 8
<b>Flow rate (NI/min)</b>	810	950	680	1800	2100	1500
<b>Response time (ms) at 6 bar</b>	on: 13 off: 28	on: 15 off: 15	on: 14 off: 16	on: 16 off: 27	on: 18 off: 18	on: 16 off: 22
<b>Weight (kg)</b>	0.231	0.330	0.330	0.470	0.630	0.630

## Dimensions

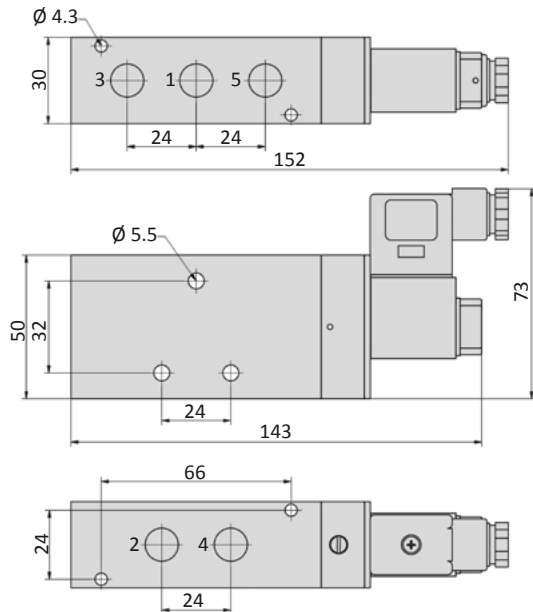
### ICK-09-511-HN



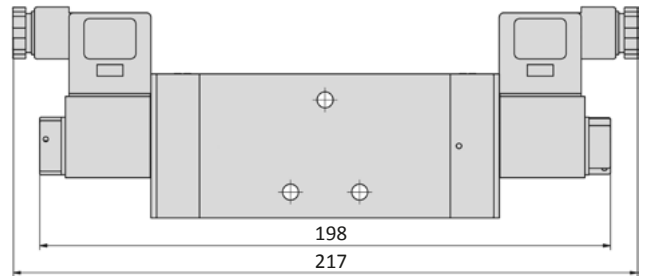
### ICK-09-520-HN, ICK-09-530-HN



### ICK-10-511-HN



### ICK-10-520-HN, ICK-10-530-HN



1 = pressure inlet  
2,4 = outlets  
3,5 = exhausts

Plug socket (not included in scope of delivery) can be repositioned by 180°. Solenoid coil can be repositioned.

## Accessories



Plug sockets: page 6-14



Manifolds and accessories: page 4-21

