

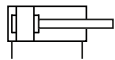
Technical details

Operating pressure	1 ... 10 bar
Temperature range	-20°C ... +70°C
Medium	Filtered, oil-free and dried compressed air according to ISO 8573-1:2010, Class 7:2:4, instrument air, free of aggressive additives. Alternatively the pressure dew point must be at least 10°C below lowest occurring ambient temperature.
Materials	Cylinder tube: Al (anodized) End caps: Al (anodized) Piston rod: steel hard chrome plated Seals: PU, NBR

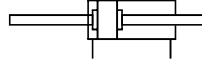


Double acting pneumatic cylinder with magnetic piston for proximity sensors and built-in cushioning rings.

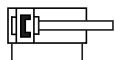
Versions



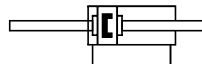
350, 360
double acting, built-in cushioning rings,



750, 760
double acting, double end piston rod, built-in cushioning rings

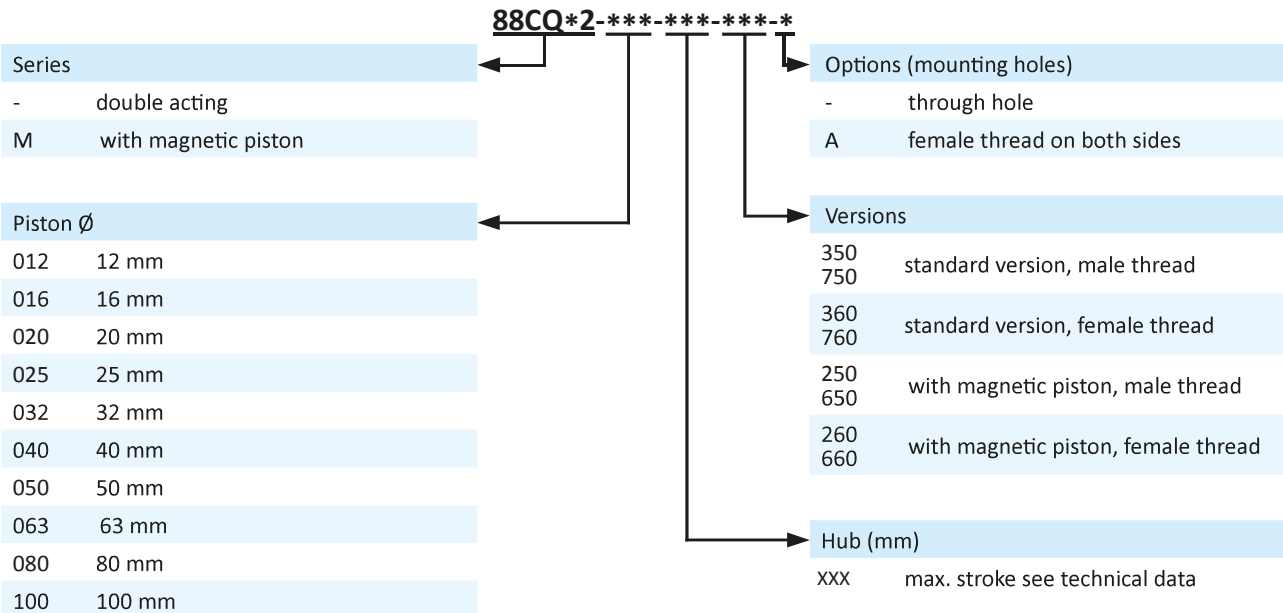


250, 260
double acting, built-in cushioning rings, with magnetic piston



650, 660
double acting, double end piston rod, built-in cushioning rings, with magnetic piston

Order code



Not all combinations are possible and available.

Series 88-CQ2

double acting

Technical data

Model-no.:	88-CQ2-012-...	88-CQ2-016-...	88-CQ2-020-...	88-CQ2-025-...	88-CQ2-032-...	
Piston \varnothing (mm)	12	16	20	25	32	
Force at 6 bar (N)	Extension	81	81	170	265	434
	Retraction	109	109	127	223	373
Connection	M5	M5	M5	M5	G1/8	
Speed	30 - 500 mm/s	30 - 500 mm/s	30 - 500 mm/s	30 - 500 mm/s	30 - 500 mm/s	
Stroke (mm)	5 - 30	5 - 30	5 - 50	5 - 50	5 - 100	
Piston rod thread	male	M5	M6	M8	M10 x 1.25	M14 x 1.5
	female	M3	M4	M5	M6	M8

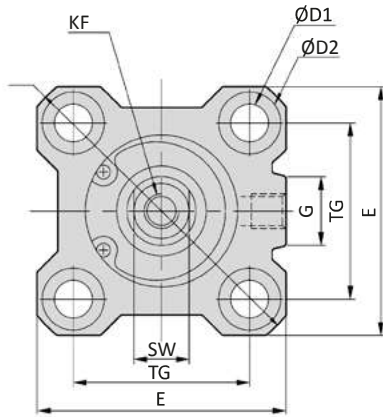
Model-no.:	88-CQ2-040-...	88-CQ2-050-...	88-CQ2-063-...	88-CQ2-080-...	88-CQ2-100-...	
Piston \varnothing (mm)	40	50	63	80	100	
Force at 6 bar (N)	Extension	678	1060	1682	2713	4239
	Retraction	617	951	1574	2543	3974
Connection	G1/8	G1/4	G1/4	G3/8	G3/8	
Speed	30 - 350 mm/s	30 - 350 mm/s	30 - 250 mm/s	30 - 250 mm/s	30 - 250 mm/s	
Stroke (mm)	5 - 100	5 - 100	5 - 100	5 - 100	5 - 100	
Piston rod thread	male	M14 x 1.5	M18 x 1.5	M18 x 1.5	M22 x 1.5	M26 x 1.5
	female	M8	M10	M10	M16	M20

Proximity sensors

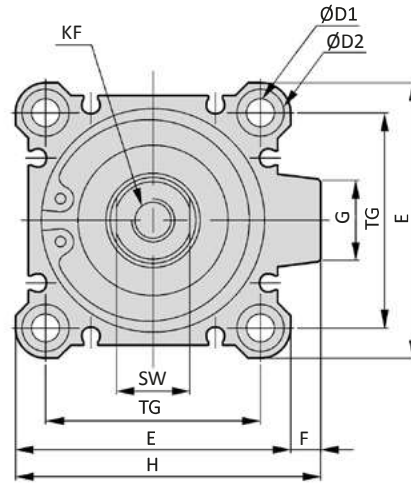


Dimensions series 88-CQ2

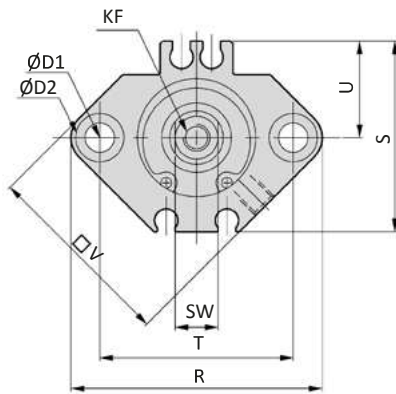
88-CQ2, \varnothing 12 - 25



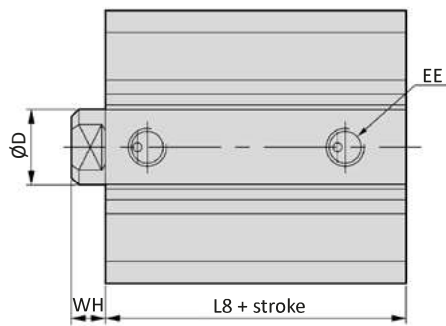
88-CQ2, 88-CQM2, \varnothing 32 - 100



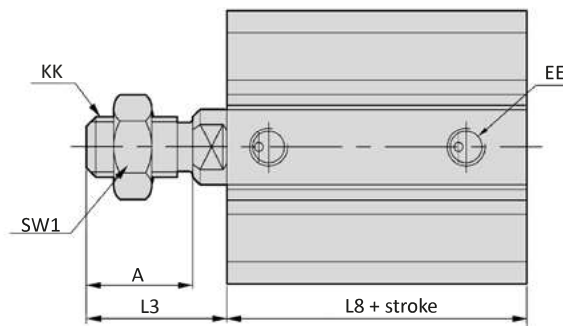
88-CQM2, \varnothing 12 - 25



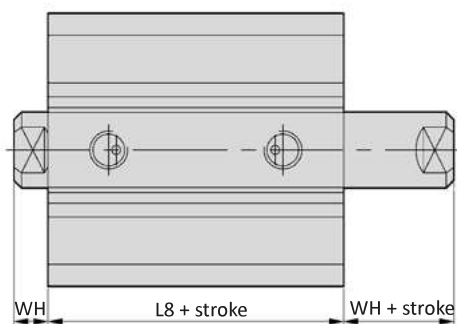
Versions 260, 360



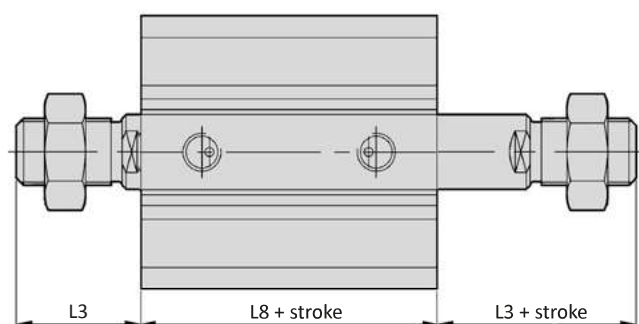
Versions 250, 350



Versions 660, 760



Versions 650, 750



Series 88-CQ2

double acting

Dimensions series 88-CQ2

Piston \varnothing	A	$\varnothing D$	$\varnothing D1$	$\varnothing D2$	$\varnothing D2$ (Option A)	E	EE	F	G
12	10.5	6	3.5	6.5 x 3	M4 x 7	25	M5	-	-
16	12	8	3.5	6.5 x 3	M4 x 7	29	M5	-	10
20	14	10	5.5	9 x 7	M6 x 10	36	M5	-	10
25	17.5	12	5.5	9 x 7	M6 x 10	40	M5	-	10
32	23.5	16	5.5	9 x 7	M6 x 10	45	G1/8	4.5	14
40	23.5	16	5.5	9 x 7	M6 x 10	52	G1/8	5	15
50	28.5	20	6.6	11 x 8	M8 x 14	64	G1/4	7	19
63	28.5	20	9	14 x 10.5	M10 x 18	77	G1/4	7	19
80	35.5	25	11	17.5 x 13.5	M12 x 22	98	G3/8	6	25
100	35.5	32	11	17.5 x 13.5	M12 x 22	117	G3/8	6.5	25

Piston \varnothing	H	KF	KK	L3	SW	SW1	TG	WH
12	-	M3	M5	14	5	8	15.5	3.5
16	-	M4	M6	15.5	6	10	20	3.5
20	-	M5	M8	18.5	8	13	25.5	4.5
25	-	M6	M10x1.25	22.5	10	17	28	5
32	49.5	M8	M14x1.5	28.5	14	22	34	7
40	57	M8	M14x1.5	28.5	14	22	40	7
50	71	M10	M18x1.5	33.5	17	27	50	8
63	84	M10	M18x1.5	33.5	17	27	60	8
80	104	M16	M22x1.5	43.5	22	32	77	10
100	123.5	M20	M26x1.5	43.5	27	41	94	12

Piston \varnothing	Stroke (mm)	88-CQ2		88-CQM2					
		L8	L8	R	S	T	U	V	
12	5 - 30	17	28	33	27.5	22	14	25	
16	5 - 30	18.5	30.5	37	29.5	28	15	29	
20	5 - 50	19.5	31.5	47	35.5	36	18	36	
25	5 - 50	22.5	32.5	52	40.5	40	21	40	
32	5 - 49	23	33	-	-	-	-	-	
	50 - 100	33	33	-	-	-	-	-	
40	5 - 49	29.5	39.5	-	-	-	-	-	
	50 - 100	39.5	39.5	-	-	-	-	-	
50	5 - 49	30.5	40.5	-	-	-	-	-	
	50 - 100	40.5	40.5	-	-	-	-	-	
63	5 - 49	36	46	-	-	-	-	-	
	50 - 100	46	46	-	-	-	-	-	
80	5 - 49	43.5	53.5	-	-	-	-	-	
	50 - 100	53.5	53.5	-	-	-	-	-	
100	5 - 49	53	63	-	-	-	-	-	
	50 - 100	63	63	-	-	-	-	-	