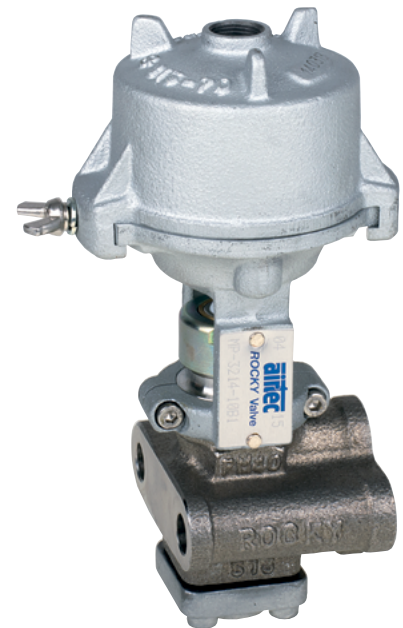


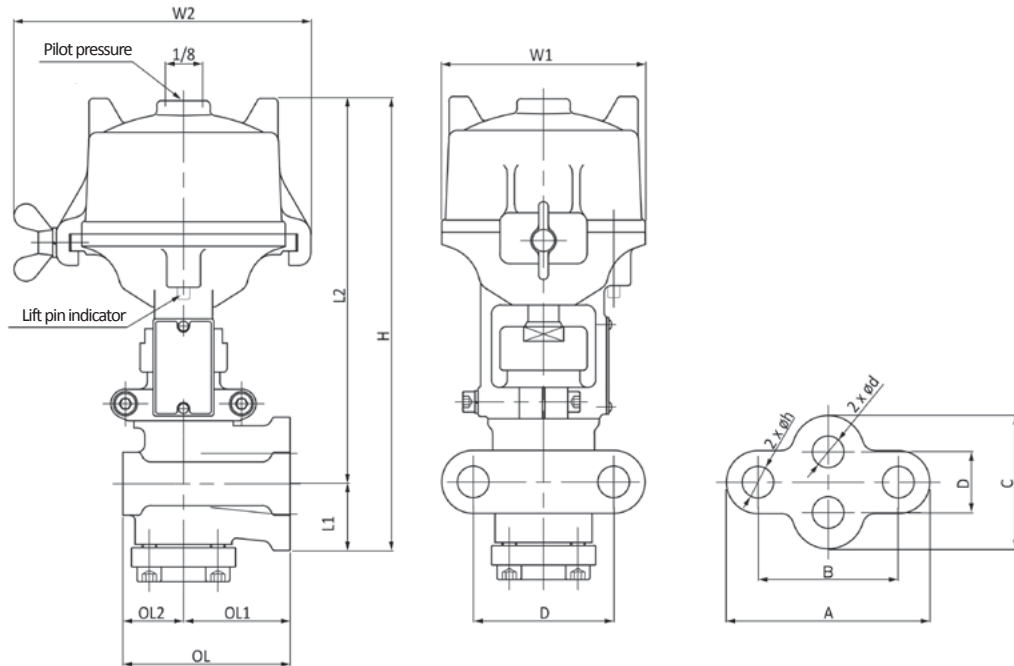
These valves are designed for the use with Steam, Hot Water, Cold Water, Air, Gas or on Vacuum Service. This valves are especially made for manifold block application. The design based on the long field proven TPC series in the tire industry.

Operating pressure	max. 580 psi
Back pressure	max. 362 psi
Pilot pressure	65 - 101psi
Pressure class	300
Temperature range	- 22°F to + 419°F
Medium	Steam, Nitrogen, Air
Body material	Stainless steel casting
Stem and seat material	Stainless steel
Packing material	Graphite-reinforced Teflon®
Seal type	Carbon Teflon®

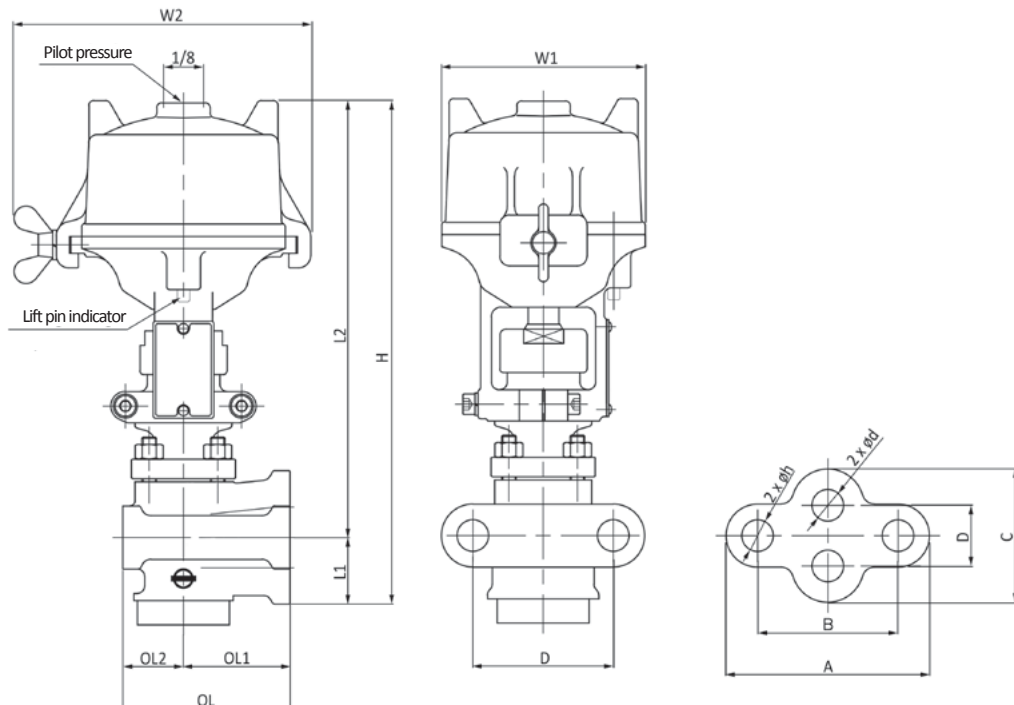


Dimensions (mm)

MP-3214
normally closed



MP-3224
normally open



MT valve, panel version

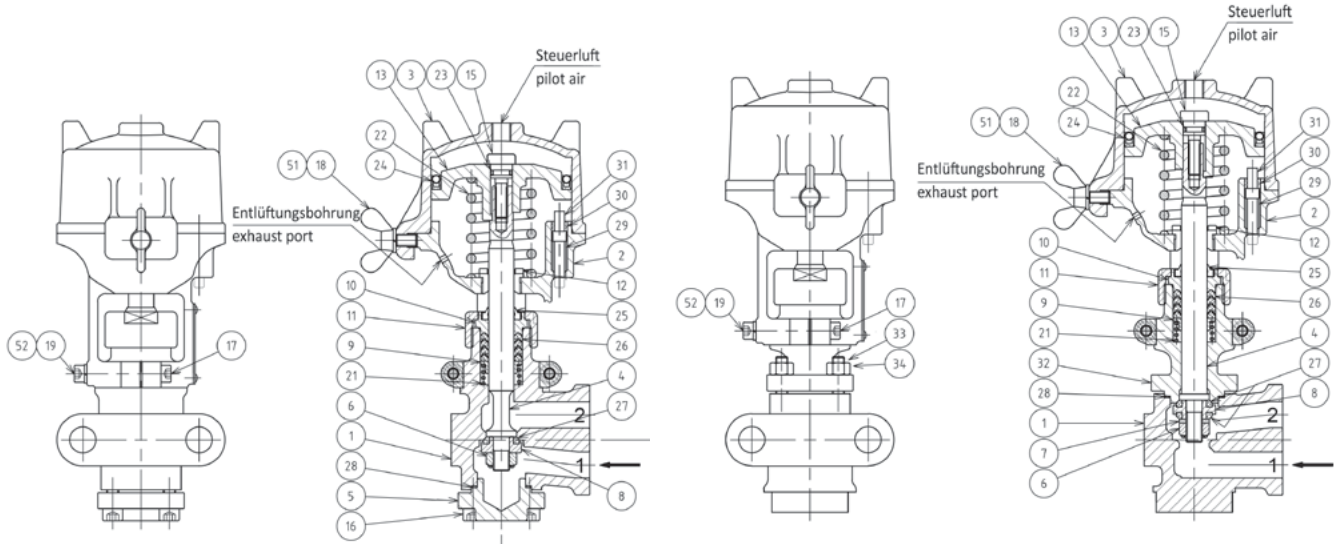
Model No.	DN	d	OL1	OL2	OL	L1	L2	H	W ₁	W ₂	A	B	C	D	h	Weight (lbs)
MP-3214-10*	10	13	44	25	69	42.3	159	201.3	84	112	84	58	55	25	13	6.8
MP-3214-20*	20	19	53	27	80	52.8	185.5	238.3	100	128	90	64	80	40	13	10.8
MP-3214-32*	32	32	62	38	100	76.3	229	305.3	128	157	124	90	114	50	17	20.9
MP-3224-10*	10	13	44	25	69	36	182.3	218.3	84	112	84	58	55	25	13	7.1
MP-3224-20*	20	19	53	27	80	44	213.3	257.3	100	128	90	64	80	40	13	11.0

* please complete: B1 = 1/8", B = 1/4", B2 = 3/8"

Spare parts

MP, normally closed

MP, normally open



No.	Name	Valve	MP-3214-10-*	MP-3214-20-*	MP3214-32-*	MP-3224-10-*	MP-3224-20-*
1	Body		MP-31410 - 01	MP-31420 - 01	MP-31432 - 01	MT-32410 - 01	MT-32420 - 01
2	Yoke		PP-11415 - 02	PP-11420 - 02	PP-11432 - 02	PP-11415 - 02	PP-11420 - 02
3	Cylinder		PP-11415 - 03 *	PP-11420 - 03 *	PP-11432 - 03 *	PP-11415 - 03 *	PP-11420 - 03 *
4	Stem		MT-31420 - 04	MT-31420 - 04	MT-31432 - 04	MP-32410 - 04	MP-32420 - 04
5	Lower seat		MT-31110 - 05	MT-31120 - 05	MT-31132 - 05	-	-
6	U-nut		C-21120 - 06	C-21120 - 06	C-21120 - 06	C-21120 - 06	C-21120 - 06
7	Guide washer		-	-	-	C-21120 - 07	C-21120 - 07
8	Disc adapter		PP-11420 - 08	PP-11420 - 08	PP-11432 - 08	C-21120 - 08	C-21120 - 08
9	Ring washer		C-21115 - 09	C-21120 - 09	C-21132 - 09	C-21115 - 09	C-21120 - 09
10	Gland		C-21115 - 10	C-21120 - 10	C-21132 - 10	C-21115 - 10	C-21120 - 10
11	Gland nut		C-21115 - 11	C-21120 - 11	C-21132 - 11	C-21115 - 11	C-21120 - 11
12	Guide bushing		C-21115 - 12	C-21120 - 12	C-21132 - 12	C-21115 - 12	C-21120 - 12
13	Piston		MT-31110 - 13	MT-31120 - 13	MT-31132 - 13	MT-31110 - 13	MT-31120 - 13
15	Tension bolt		C-21115 - 15	C-21120 - 15	C-21132 - 15	C-21115 - 15	C-21120 - 15
16	Socket cap screw		C-21115 - 16	C-21120 - 16	C-21132 - 16	-	-
17	Socket cap screw		C-21115 - 17	C-21120 - 17	C-21132 - 17	C-21115 - 17	C-21120 - 17
18	Wing bolt		C-21115 - 18	C-21120 - 18	C-21132 - 18	C-21115 - 18	C-21120 - 18
19	Socket cap screw		C-21115 - 19	C-21120 - 19	C-21132 - 19	C-21115 - 19	C-21120 - 19
21	Packing spring		C-21115 - 21	C-21120 - 21	C-21132 - 21	C-21115 - 21	C-21120 - 21
22	Piston Spring		MT-31110 - 22	MT-31120 - 22	MT-31132 - 22	MT-32110 - 22	MT-32120 - 22
23	O-ring		C-21115 - 23	C-21120 - 23	C-21132 - 23	C-21115 - 23	C-21120 - 23
24	Piston ring		PP-11415 - 24	PP-11420 - 24	PP-11432 - 24	PP-11415 - 24	PP-11420 - 24
25	Dust seal		C-21115 - 25	C-21120 - 25	C-21132 - 25	C-21115 - 25	C-21120 - 25
26	Gland packing		C-21115 - 27	C-21120 - 27	C-21132 - 27	C-21120 - 27	C-21120 - 27
27	Disc ring (2x)		C-21115 - 28	C-21120 - 28	C-21132 - 28	C-21115 - 28	C-21120 - 28
28	Lower seat gasket		C-21115 - 30	C-21120 - 30	C-21132 - 30	C-21115 - 30	C-21120 - 30
29	Indicator spring		PP-11415 - 29	PP-11420 - 29	PP-11432 - 29	PP-11415 - 29	PP-11420 - 29
30	Dry bearing		PP-11415 - 30	PP-11420 - 30	PP-11432 - 30	PP-11415 - 30	PP-11420 - 30
31	Lift pin gauge		PP-11415 - 31	PP-11420 - 31	PP-11432 - 31	PP-11415 - 31	PP-11420 - 31
32	Bonnet		-	-	-	MP-32410 - 32	MP-32420 - 32
33	Stud bolt		-	-	-	PP-12415 - 33	PP-12420 - 33
34	Nut		-	-	-	PP-12415 - 34	PP-12420 - 34
51	Spring lock washer		C-21115 - 51	C-21120 - 51	C-21132 - 51	C-21115 - 51	C-21120 - 51
52	Spring lock washer		C-21115 - 51	C-21120 - 51	C-21132 - 51	C-21115 - 51	C-21120 - 51

* please complete: B1 = 1/8", B = 1/4", B2 = 3/8"

5

Order Code

M * -3 2 * * - * * * *

