

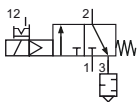
3/2-way inline valve VMY

Technical details

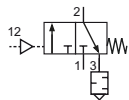
Temperature range	0°C ... +50°C
Input range	electrically operated: 2 ... 10 bar pneumatically operated: max. 16 bar (size Y0 max. 12 bar)
Mounting	arbitrary
Medium	compressed air according to ISO 8573-1:2010, neutral gases
Materials	Body: Grivory (PA66) and POM, seals: NBR, inner parts: zinc coated steel, stainless steel and brass
Protection	IP 65 according to EN 60529



3/2-way poppet valve, electrically or pneumatically operated.
Silencer is mounted in exhaust.
Plug socket is included.



electrically operated
3/2-way, single solenoid, mechanical
spring return, NC



pneumatically operated
3/2-way, single pilot, mechanical
spring return, NC

Order code

Series		VMY-**-00-0-000*		Versions	
Connection / Size		Digit 4	Version		
04	G1/4 / Y0		A	24 V DC, 2.5 W	
14	G1/4 / Y1		D	115 V AC, 3 VA	
37	G3/8 / Y1		E	230 V AC, 3 VA	
38	G3/8 / Y2		F	pneumatically operated	
12	G1/2 / Y2				
34	G3/4 / Y3				
10	G1 / Y3				

Technical data

Model-no.:	VMY-04-...	VMY-14-...	VMY-37-...	VMY-38-...	VMY-12-...	VMY-34-...	VMY-10-...
Connection	G1/4	G1/4	G3/8	G3/8	G1/2	G3/4	G1
Size	Y0	Y1	Y1	Y2	Y2	Y3	Y3
Flow (1-2 in NI/min)	2000	2000	2000	4300	4300	12500	12500
Weight(Version A-E) (kg)	0.22	0.28	0.27	0.59	0.58	0.78	0.71
Weight(Version F) (kg)	0.19	0.25	0.24	0.56	0.55	0.75	0.68